

Commercial buildings

Renovated buildings

Highly commended

Willis Building

Architect :
Foster & Partners
Architectural Ironmongery
Trapex Hardware Ltd

A new headquarters for Willis at 51 Lime Street in the City of London, the project is significant in both urban and environmental terms. Open and integrated at street level, its shops and cafés extend the spirit of nearby Leadenhall Market; and its progressive environmental strategy surpasses statutory carbon reduction targets by more than 20 per cent.

The development comprises two separate buildings which step down to a public plaza. Located to the east of the Lloyds Building, the 10-storey building at 1 Fenchurch Street responds to the smaller scale of Billiter Street and Fenchurch Avenue, while the 29-storey Willis headquarters building rises to the west of the site. The smaller building's concave façade shapes the plaza and its curved corners maintain important view corridors, as well as reinstating an historic route through the site.

The ironmongery supplied to this award winning project comprised of a mixture of aluminum and stainless steel. The finish of the products were consistent throughout in that the same grade of satin was applied not only to the lever and pull handles but also the door closers, hinges, and signage.

Trapex worked closely with both the architect and the contractor over a considerable period of time as during the build there were various design revisions which had to be allowed for in order to provide the correct ironmongery specification.

Trapex have now been manufacturing for 50 years and have been involved in many prestigious projects.

As a company we have always found the best type of advertising is by word of mouth.

The best recommendation is from our clients who have specified and installed our products.

On many occasions we have been requested by our industries body **The Guild Of Architectural Ironmongery (GAI)** to enter our projects into the **Architectural Ironmongery Specification Awards**.

In 2008/2009 Trapex decided this would be a good test to see what others in our industry thought of our product and specifications and entered two projects

The Willis Building & 85 Fleet Street

As you can see both of these projects were winners in their respective categories.

Trapex are proud to say that not only our clients, but also our industry have recognised our products as being of the highest quality.

A small list of further projects undertaken and supplied.

Education

- Loughborough University
- English Institute of Sport - Bath
- Herschel Grammar School - Slough
- University Of Cambridge Institute For Manufacturing
- Arup Campus-Birmingham

Rossington All Saints School

Leisure And Sport

- City Of Manchester Stadium
- Regents Park Multi Sports Hub
- Lords Cricket Ground
- Talacre Sports Centre

Residential

- Cyberport - Hong Kong
- Quartermile - Edinburgh

Commercial

- Tower Place - London
- Bishops Square - London
- Hardman Square - Manchester
- New Mail Centre - Leeds

Health

- St Anthony's Hospital - Surrey
- Brighton & Sussex University Hospital



Winner

85 Fleet Street

Architect :
Crouch Butler Savage Ltd
Architectural Ironmongery
Trapex Hardware Ltd

The project comprised of a fit out of an existing building, originally designed by Sir Edwin Lutyens, located in Fleet Street, London.

The brief from the architect was that the ironmongery should be of the highest quality to match the specialist doors and joinery which were selected to accommodate twenty first century specification but had to be in keeping with the original design of the building.

Trapex supplied standard products from their 20 Range of architectural ironmongery; they also provided pull handles and lever handles from their FT Range which was designed in collaboration with Foster and Partners and Trapex.

These handles were supplied in straight and cranked version and were manufactured in grade 316 stainless steel with brown EPDM synthetic rubber grip section.

Due to the specialist joinery of certain doors Trapex had to produce purpose made single action bottom strap and top centres for use with floor springs.

The WC cubicles were fitted with rising butt hinges which had the Trapex built-in damper unit, these units are incased within the hinge itself, and prevent the doors from slamming and are fully adjustable.





Bel Air / Cyber Port - Hong Kong

Export

The FT Range of ironmongery was specified and supplied by Trapex at the prestigious apartments at Cyber Port Hong kong,

The handles supplied were stainless steel with wood grip section



Ropemaker Place

This 21 story building was designed to offer high quality flexible office space. It also tries to make the most of its island position utilising the natural light, this is further enhanced by an internal atrium

.Product Range Supplied

Trapex 20 Range.
Special rubber section D handles.





**Caja Madrid Tower
Madrid, Spain,**

This new headquarters building for Caja Madrid – the largest bank in Spain - continues investigations into the flexible workplace that can be traced through a family of recent office towers, most notably for Swiss Re and Commerzbank. This degree of flexibility results in part from pushing the service cores to the edges of the plan - a strategy first used in the design of the Hongkong Bank – to create uninterrupted 1200-square-metre floor plates.

Product Range Supplied

Special design full height stainless steel oval pull handles (Purpose Made For Project)



**Silken Hotel Puerta America
Madrid, Spain,**

Individual floors at The Silken Group’s Hotel Puerta America are fitted-out by different world-renowned architects, including Foster + Partners, Zaha Hadid, John Pawson, and Ushida Findlay. The Foster vision for the second floor was inspired by the work of the late Basque sculptor, Eduardo Chillida, who was a personal friend of both the client and Lord Foster. Chillida’s work explored natural materials, organic forms, and an architectural sense of space – concerns which are reworked in the Foster scheme to create a design concept founded on simplicity, function and luxury.

Product Range Supplied

FT Range.





Asprey Garrard, The upmarket jewellers in Londons New Bond Street, has completed a refurbishment designed by architect Foster & Partners. For the project, Trapex Hardware supplied all the period and special door ironmongery.

Products

20 Range and Period and special door ironmongery,



Quartermile, Edinburgh.

The exterior of the buildings have been largely restored and linked by a 3 storey glass enclosed stairway which also forms the western end of a new central square at the heart of Foster & Partners masterplan.

Product Range Supplied

20 Range.





Plantation Place

Plantation Place is in the heart of the City of London where it occupies almost a complete block. As with its neighbour, Plantation South, the design of the building reflects a desire to maintain the human scale and complexity of this part of London; and to provide an ecologically efficient, adaptable and healthy workplace.

Product Range Supplied

Trapex 20 Range.

Plantation Place 2 "Mincing Lane"

Whilst 2 Plantation Place adheres to the principles developed for the scheme as a whole, it has a distinct identity within the overall site. The massing of the building is derived from the prominence of its corner location and the creation of sympathetic relationships with the adjoining buildings.

Product Range Supplied

Trapex 20 Range.



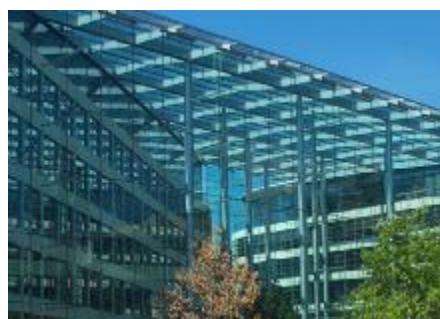


Electronic Arts

The headquarters building is designed to provide high-quality workspace and an extensive range of on-site facilities with a low-energy environmental strategy. The office floors are arranged as 'fingers' which project into the landscape, linked by a street-like atrium that runs along the banks of a lake.

Product Range Supplied

Trapex 20 Range.



Tower Place - London

This low-rise, deep-plan, energy-conscious office building with flexible, full-access floors and improved circulation is a typology pioneered by the practice in the early 1970s. The new buildings at Tower Place also help to restore the site's traditional urban grain, while reinstating historical views and creating a new public plaza with trees and water in front of All Hallows Church.

Product Range Supplied

Trapex 20 Range.





Moor House

The new 30,100 sqm office building designed by Foster + Partners, was launched in 2005 in a joint venture between Hammerson plc and Henderson Global Investors.

Moorhouse rises from a two storey retail plaza providing a focal point for the development. Below ground, the scheme includes a link to the future CrossRail ticket hall of Moorgate station. The 16 floors of offices provide high quality air-conditioned accommodation with spectacular City views.

Product Range Supplied

Trapex 20 Range.



More London

The site is a few minutes walk from London Bridge Rail and Underground Stations one of the capitals best served transport hubs. It is also close to Tower Hill Underground Station and is served by numerous bus routes. Accordingly, the development can rely on public transport, minimising the negative impact of the car.

More than half the site will be open public space, including two large piazzas equivalent in size to Parliament Square and Hanover Circus. The scoop, a sunken amphitheatre adjacent to City Hall has already hosted several public events including theatre productions and an open-air music festival.

Product Range Supplied

Trapex 20 Range.





Manchester Stadium

The City of Manchester Stadium was designed to host the 2002 Commonwealth Games and subsequently to become the home for Manchester City Football Club. Completion of the stadium marks over a decade of involvement by Arup Associates that began with Manchester's Olympic bid in 1992.

Product Range Supplied

Trapex 20 Range.



Bishop Square

Bishops Square development provides a major new public space for London larger than the Piazza at Covent Garden. It completes the regeneration programme of this historically important neighbourhood bridging the City and the East End.

Product Range Supplied

Trapex 20 Range.





Exclusive to YachtPlus, the Foster designed 40 'Signature Series' is a new concept private luxury super-yacht for a new generation of yacht owner. Her unique contemporary shape makes her unmistakably a piece of modern architecture

Product Range Supplied
FT Range.

